



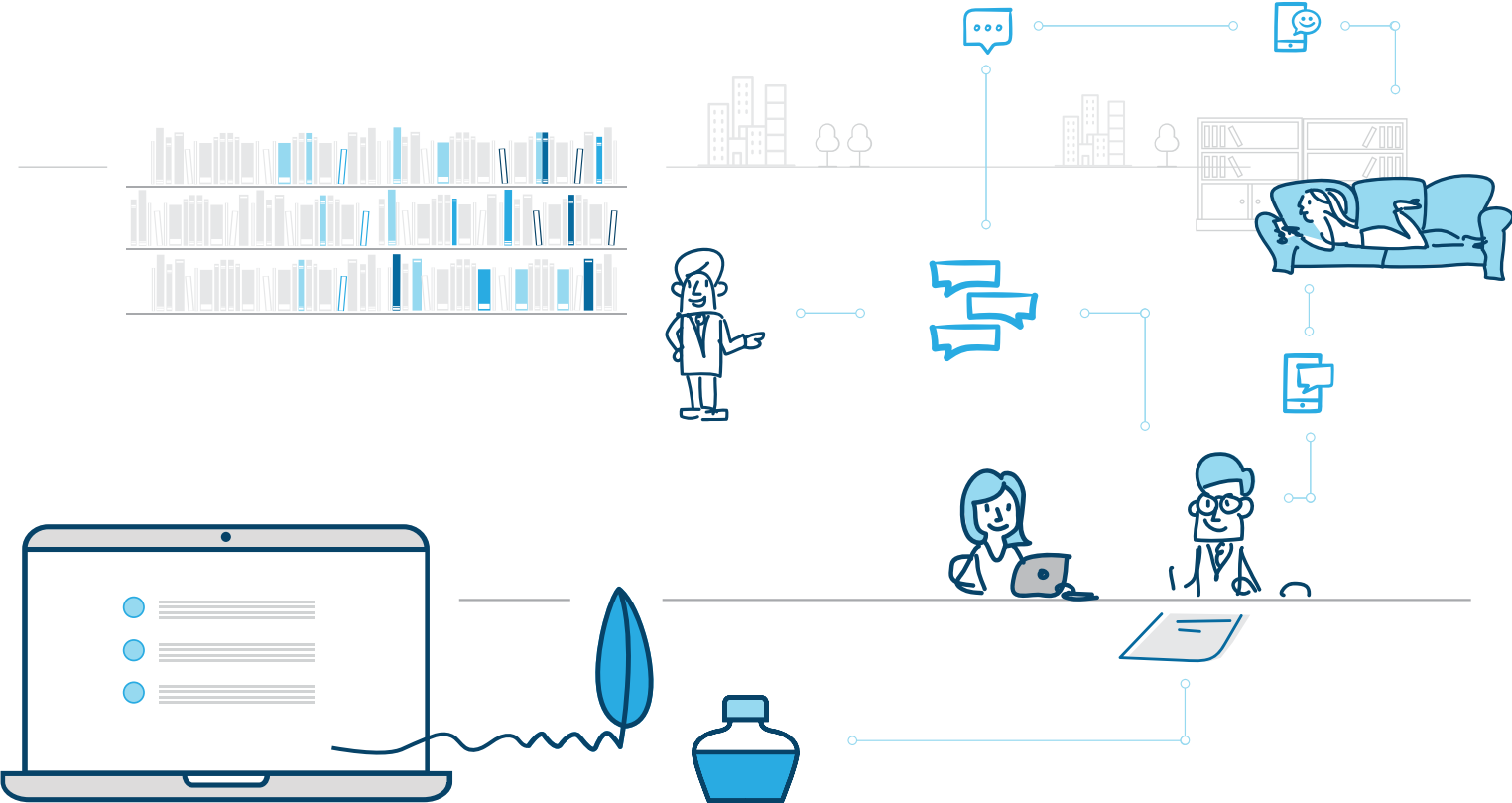
Writing and Publishing simplified.

Better research. Less hassle.



Better research. Less hassle.

Engaged researchers. Instant collaboration.



SciFlow is a writing and publishing tool designed specifically for academic researchers. We have removed everything which frustrates researchers or costs too much time. Formatting is now automated. Reference management is easy. Collaboration is instant and all in one place.

SciFlow is designed to save researchers and students time and hassle, so they can concentrate on producing better work.

Say goodbye to formatting frustration

Confusing comments and messy mark-ups are now a thing of the past

PROBLEMS RESEARCHERS FACE



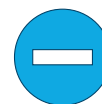
Frustrating Formatting

Formatting articles to journal specs takes time. Lots of time. 14 hours per paper, according to the most recent research. And if she submits the article to another journal, the researcher gets to start all over again.



Complicated Collaboration

We've all been there. Sending a Word file to a colleague, only to waste time looking through old e-mails for the correct version when we realize there is a conflict.



Restrictive Re-use

A complete text, even when published in a journal, is difficult to re-use, distribute, or publish online. Often, the author doesn't even have the final text available.



2 Researchers spend **days**

formatting a research paper for publication in a peer-reviewed academic journal.¹ That is 52 hours (or a very long week) per researcher, per year, spent on an annoying waste of time.

Not any more.

¹ Source: LeBlanc et al., 2019.



In five to ten years support for the open scholarly commons will need to consume over half of library expenditures.

David W. Lewis
Dean Emeritus, Purdue
University Library
Indianapolis

New digital library services need better User Experience

Libraries are there to provide information. As the scholarly ecosystem changes, libraries need to evolve too. Therefore libraries are offering expanded digital services for daily activities of researchers and students. As with every new digital service, UX is the key.



THE SCIFLOW MANIFESTO

We believe...

- 1** Research papers must be quickly accessible without transaction costs
- 2** Basic research tools must be available to everyone
- 3** It must be easy to cite and re-use digital content



That is why we built our collaborative software service. Writing and editing take place in the cloud, so researchers wave goodbye to multiple versions of documents with color-coded mark-ups.

And we remove the hours of frustration spent formatting and fiddling with references. SciFlow does all this at the push of a button.

In short, SciFlow helps researchers produce better quality research in less time by removing the hassle.

The new Writing and Publishing solution for Researchers and Libraries

THE SCIFLOW EFFECT

Engaged Researchers & Students

SciFlow was designed specifically to solve the problems research academics encounter when writing and publishing their work. So it's no wonder they enjoy using it. This is demonstrated by the remarkably high level of engagement among our users. SciFlow researchers spend 30 hours a week using the editor. That is more time than office workers spend using e-mail, Slack and WhatsApp combined.

Instant collaboration across all devices

At SciFlow, we believe true open access means removing barriers to successful collaboration, whatever they are. So there will never be any hidden transaction costs. No problems authorizing authors from other institutions. No technological barriers with operating systems. No licensing issues or compatibility problems with older versions. SciFlow is a central platform, accessible on any device with an internet connection. Everything you need, in one place. So you can easily collaborate with others without the hassle of sending different versions via e-mail.

We automate routine tasks

Research papers have very specific requirements. Reference management and formatting to journal specs cost time for little added value. We have automated all of the fiddly formatting and other annoying tasks. And we have integrated the tools researchers need - such as reference and citation managers like Citavi, Endnote, Mendeley and Zotero. SciFlow users don't have to switch between applications. They can concentrate on producing good work.



Text editing toolbar

Add quotes, pictures, tables or equations with buttons, designed especially for academics and scientists.

Browser-based

If you have an internet connection, you can collaborate. And even if your connection breaks down, you can still write your paper. SciFlow will update all the changes as soon as you connect again.

One Platform, unlimited devices

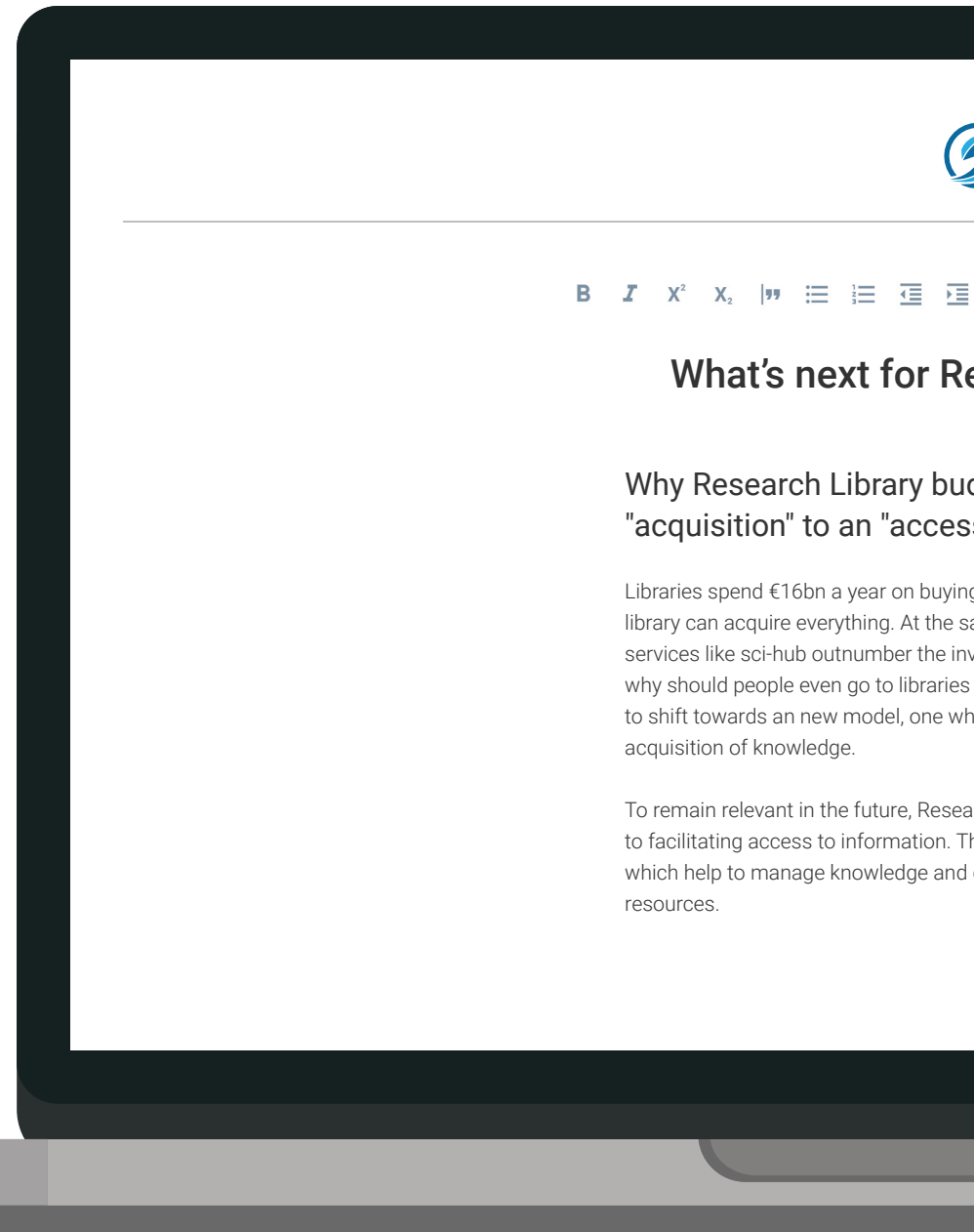
We don't believe in setting limits to academic research. So researchers can access SciFlow from as many devices as they like. No licenses or transaction fees. All you need is an internet connection and an account and you're good to go.

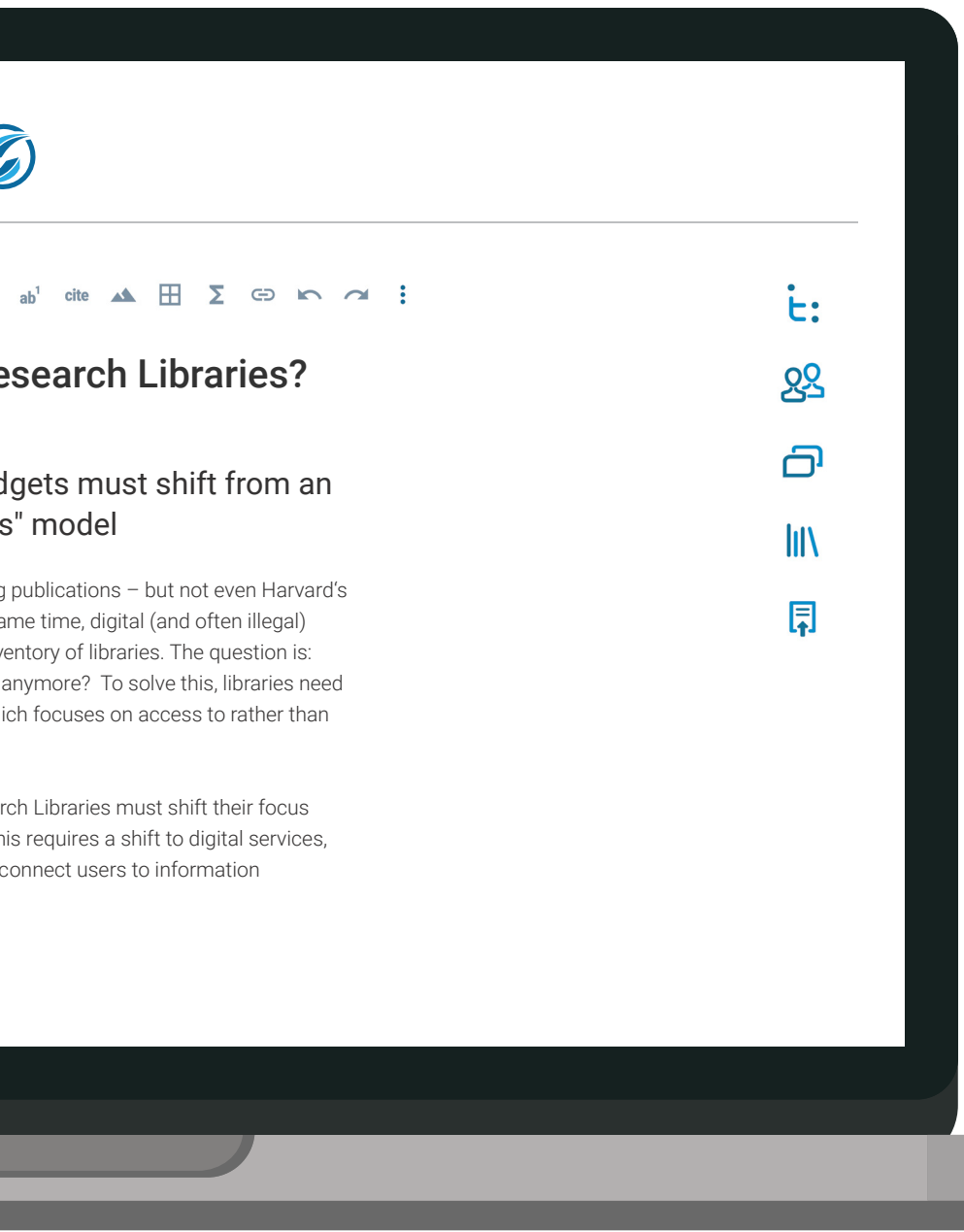
Access to a wide range of templates

We have a wide collection of templates for journal articles, scientific manuscripts and thesis templates, customized for individual publications or universities. Researchers have free access to templates, so they don't have to waste time fiddling with formatting.

Automatic backups

Oops. Forgot to save and lost half a day's work? Admit it. It's happened to you too. It's happened to everyone. Except people who use SciFlow.





Outline view to easily review long documents

No more need to reduce things to 15% size. Our easy-to-manage outline view means you can edit your structure without having to scroll up and down and lose your place.



Unlimited users, unlimited documents

We don't believe in hidden charges or limiting storage. Researchers can keep all their work in one place and easily keep track of what's been published and what still needs further work.

No hidden barriers. No matter what institution or country your colleagues find themselves in, you can give them access to all your papers and review their work too.



Comment view to quickly manage comments

Have you ever spent ages fiddling with the comments, trying to delete them, only for it to skew the formatting you just spent an hour fine-tuning? No more. SciFlow is specifically designed to allow easy commenting on others' work, and quickly managing the comments by others in your own.



Sophisticated Reference Management

No more searching for the right button only to find that you've added an Endnote instead of a Footnote. Or was it a citation? In SciFlow you can avoid all that hassle and manage references with a click of the button.



Export to a pre-programmed Template

Finished writing? One-click and your paper is ready to publish. No time needed to mess about with the formatting.

Helping you support your users

	Researcher Agreement (Free Version)	Campus Agreement
Unlimited access to the text editor	✓	✓
Unlimited documents	✓	✓
Real-time collaboration	✓	✓
Access to standard templates	✓	✓
Integration of reference managers	✓	✓
Access to new journal templates		✓
Customised templates for the research institution		✓
Access to SciFlow via your own customized portal		✓
Premium functional and technical support		✓

Coming soon...

Access to OpenD.org
Open access publishing in just a few clicks

Augmented Publishing
Making academic research a more immersive experience

3



ADVANTAGES OF A CAMPUS AGREEMENT



1

ALL THE TEMPLATES YOU NEED

Templates save time. Researchers love our templates, because it means they spend much less time on fiddly formatting and messing around with multiple versions. Journal- or institution-specific templates are one of the ways SciFlow reduces barriers to good research.



2

PREMIUM SUPPORT PACKAGE

We want to empower you to help your researchers and students. There is nothing more frustrating than a minor technical issue stopping you from making progress on and publishing your paper. At SciFlow, we believe the library is more than a place to access information. Libraries facilitate research. In the digital age, that means being able to help researchers use software.

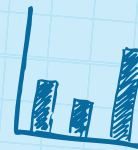


3

DETAILED DATA ANALYTICS

SciFlow helps you gain data-driven insights into how your academics do their research and the typical problems they face. The more data you have, the better you can help them produce better research.

By the way, all the data is of course completely anonymised and on servers in the right country. We've ticked all the boxes, so you don't have to.





SciFlow is a pragmatic way to improve our collaboration within research projects.



Prof. Dr. Martin Gersch

Chair of Business Administration
Freie Universität, Berlin

OUR CUSTOMERS



More focus, better research

SciFlow is “stickier” than E-mail and other productivity tools.

“Stickiness” is the ultimate measure of a software’s UX. Eyeballs times minutes is one of technology’s main drivers of value. So what does this mean for SciFlow?

For us, the more time spent by users in SciFlow - or “stickiness” - means the more we help our users produce focused research. If they don’t have to switch applications - for example, to receive new comments via e-mail - they can focus on improving their work.

On average, **our users spent 30 hours a week using SciFlow**. To put that into context, studies show that office workers spend 20 hours a week just on e-mail. Add other tools, such as Slack or WhatsApp, and SciFlow is as “sticky” as the world’s leading productivity apps.

We’re proud of that, because our users tell us it’s a contribution to their ability to do focused work and avoid distraction. SciFlow helps them do better research.

As easy to roll out as it is to use

SciFlow on your campus

Onboarding

1



Kick-Off

We conduct a call with all Stakeholders

Go Live Portal

We integrate SciFlow into your Library system interface.



Templates

Activation

2



Webinars

We organize webinars for special 'super users' and system administrators.

Then we conduct further webinars covering the basic features of SciFlow, so you are able to get started quickly.



Handbook



Webinars

Training

3



Knowledge Base

We provide a wide range of support and training materials, from a collection of Frequently Asked Questions to detailed video tutorials about specific features.

We also provide a comprehensive SciFlow handbook.



FAQ



Support Forum



Video Tutorials

Personal Support

4



Functional Support

We help you and your users get the most out of SciFlow.

Technical Support

We help you solve any technical issues that might arise.



Chat



Hotline

Ongoing Development

5



Quarterly Reports

We give you data on your users and help you improve how you use SciFlow.

Roadmap Updates

We are constantly improving SciFlow and will help you use the new features we build into our software.



Kontakt

carsten.borchert@sciflow.net
+49 (0) 177 506 1329

Adresse

SciFlow GmbH
Sandtorstraße 23
39106 Magdeburg

Website

www.sciflow.net

Geschäftsführer: Dr. Carsten Borchert, Frederik Eichler

Amtsgericht: Stendal

Registernummer: HRB 23309